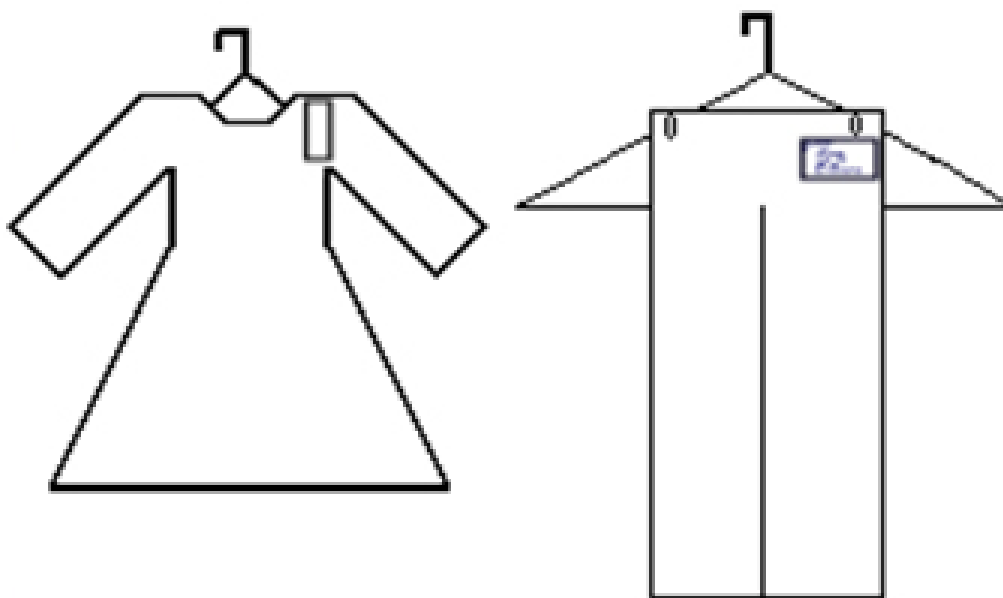


Bright Star Consignment Sale

Tag Placement



Tag Instructions

Seller ID #	Bright Star UMC	Pin Here
363	Consignment Sale	
Price	\$ 3.00	
1/2 on Sat?	<input checked="" type="radio"/> Yes or No	
Size:	18 months	
Desc:	Boys Blue Thomas Shirt	

- **Price-** Write in the center of card in 1.00 increments. Group small items in baggies. As a general rule, items should be priced at 1/4 or less of original retail. New items or items in "like new" condition should be priced no higher than 1/3.
- **Size-** Hand-write in the size of your clothing. Do not use S, M or L sizes. If a range is given for infant clothing use the lower size. i.e. for 12-18 months write 12 months. Also, be sure to separate 4 from 4T and 6 from 6X.
- **Seller ID#-** This number must be printed on your tags in the top left hand corner.
- **Desc.-** Hand-write a brief description of each item. -example Girl's Oshkosh pink shirt.
- **½ on Saturday-** This will be automatically printed in the center of the card with "Yes" or "No". We highly suggest that everyone reduce most or all of their items to half price on Saturday. If an item did not sell on Thursday or Friday for full price it most likely will not sell on Saturday for full price.
- **Donate-** Cut off the lower left hand corner where marked if you would like to donate an unsold item to the needy.